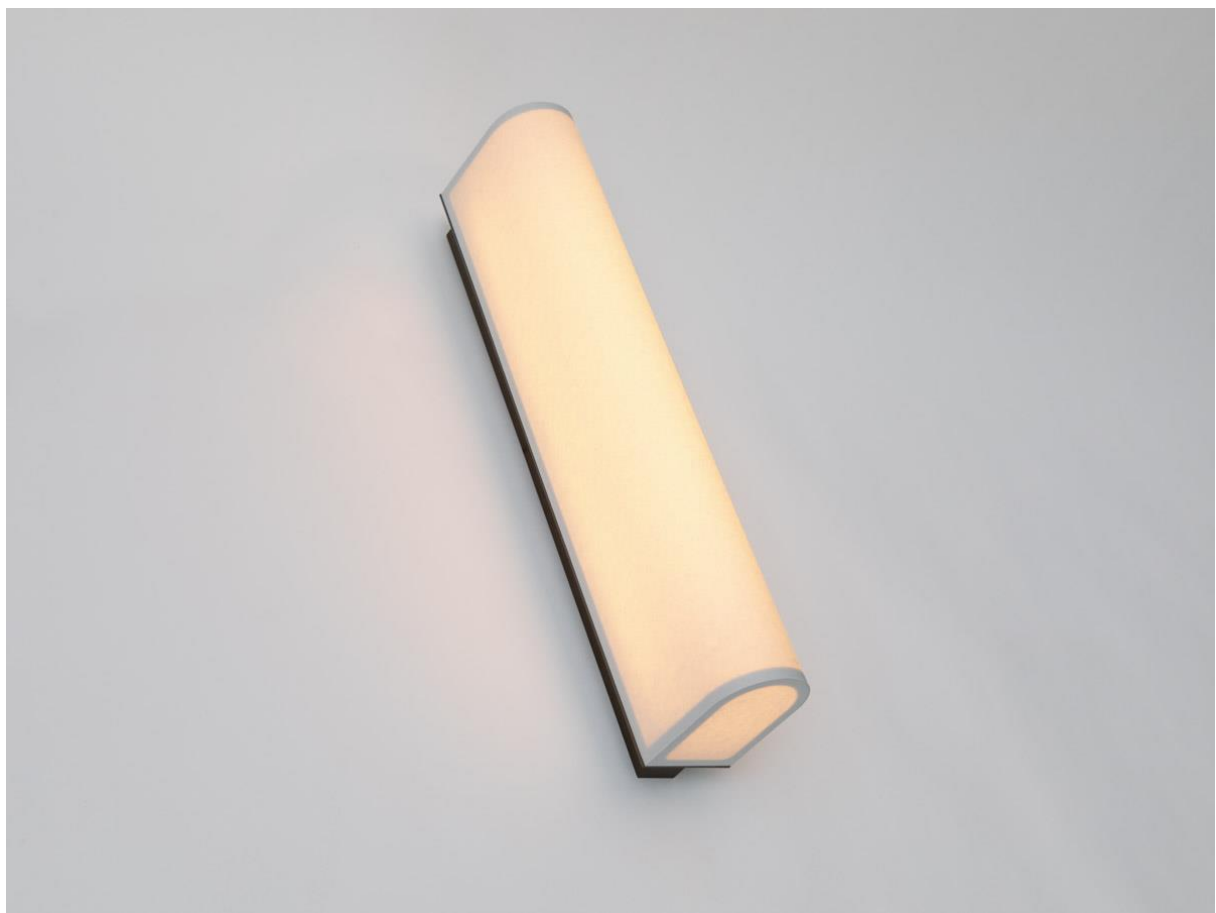


o z o n e

PRODUCT SHEET: Tennessee WL48

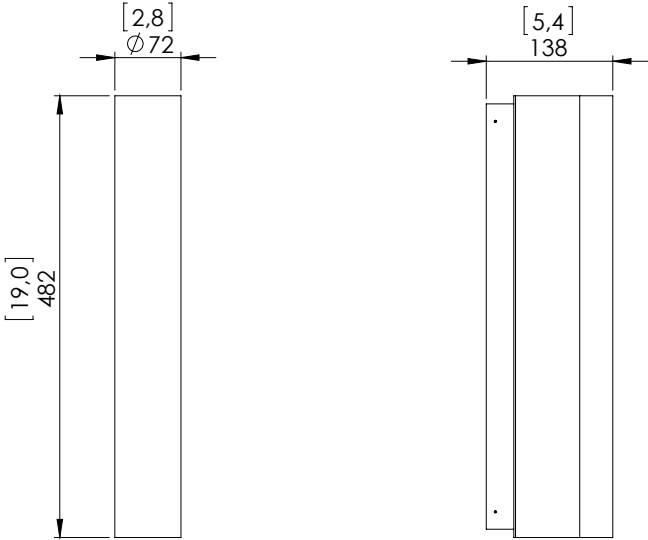
Version: ENGLISH

Date: April 2024

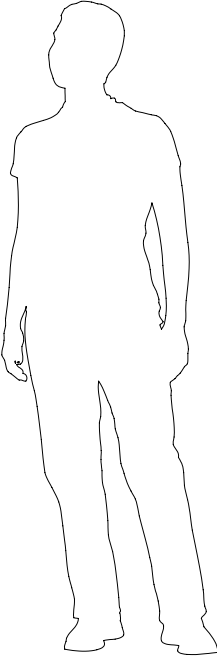


o z o n e - Tennessee WL48

DESCRIPTION: Sconce. Aluminium and brass structure. Brushed bronze finish.
White paper diffusing material.
Warm white 2200K LED sources, 8W, 370Lumens.
Converter 24V non-integrated, to be placed in a distant box.
Weight: 2,1kg - 4.7lbs
Size: 48,2x13,8x7,2cm - 19x5.4x2.8in
Compliance CE: Class III
Compliance UL: Class II, file E488484 (Tennessee WL 48)
Origin: France



Dimensions in mm [inches]



Silhouette : 175 cm/69in