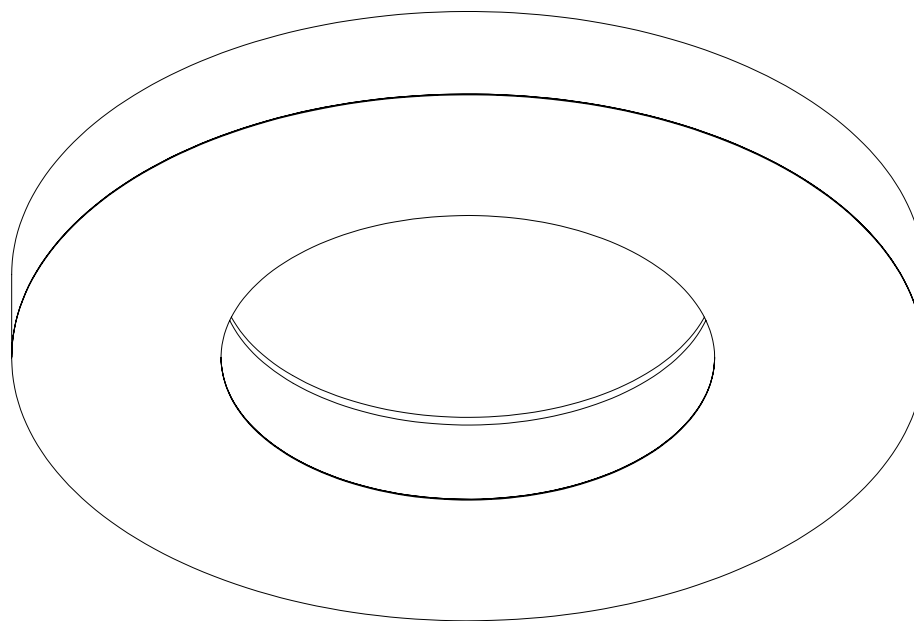


READ THE INSTALLATION
INSTRUCTIONS BEFORE
REMOVING THE LIGHT
FIXTURE FROM
PACKAGING

o z o n e



Summary

I. Check list and recommendations..... 4

PH 00.	Safety instructions	5
PH 01.	Precautions - lampshade	6
PH 02.	Precautions - plate	7
PH 03.	Power supply requirements	8
PH 04.	Check list	9

II. Installation 10

PH 05.	Position the template	11
PH 06.	Check the voltage	12
PH 07.	Remove LED plate from entry cable	13
PH 08.	Fix the plate to ceiling.....	14
PH 09.	Replace LED plate	15
PH 10.	Test	16
PH 11.	Insert the lampshade	17
PH 12.	Installation is over.....	18

III. Dim to Warm installation 19

PH 13.	Position the template	20
PH 14.	Check the voltage	21
PH 15.	Remove LED plate from entry cable	22

PH 16.	Fix the plate to ceiling	23
PH 17.	Replace LED plate.....	24
PH 18.	Test	25
PH 19.	Insert the lampshade	26
PH 20.	Installation is over.....	27

Time per phase (minutes)	1
	1
	1
	1
	1
	4
	5
	4
	12
	5
	2
	5
	1
Time per light fixture (minutes)	43

I. Check list and recommendations

ALWAYS WORK WITH ELECTRICAL POWER OFF

USE RECOMMENDED TOOLS

BE CAREFUL WITH THE EDGE OF THE LIGHT FIXTURE

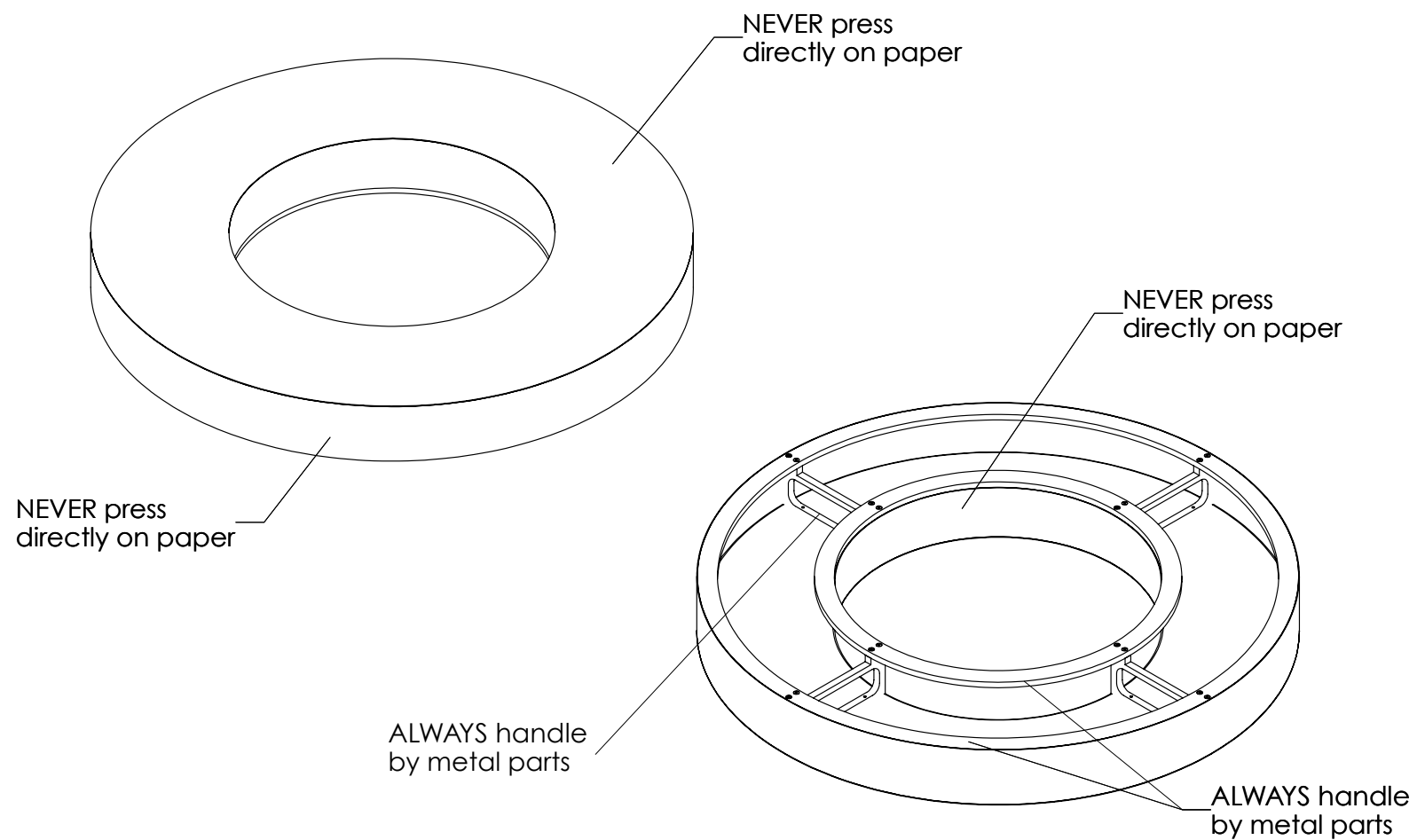
MINIMUM 3 TECHNICIANS



PH 01. Precautions - lampshade

Technicians : 1

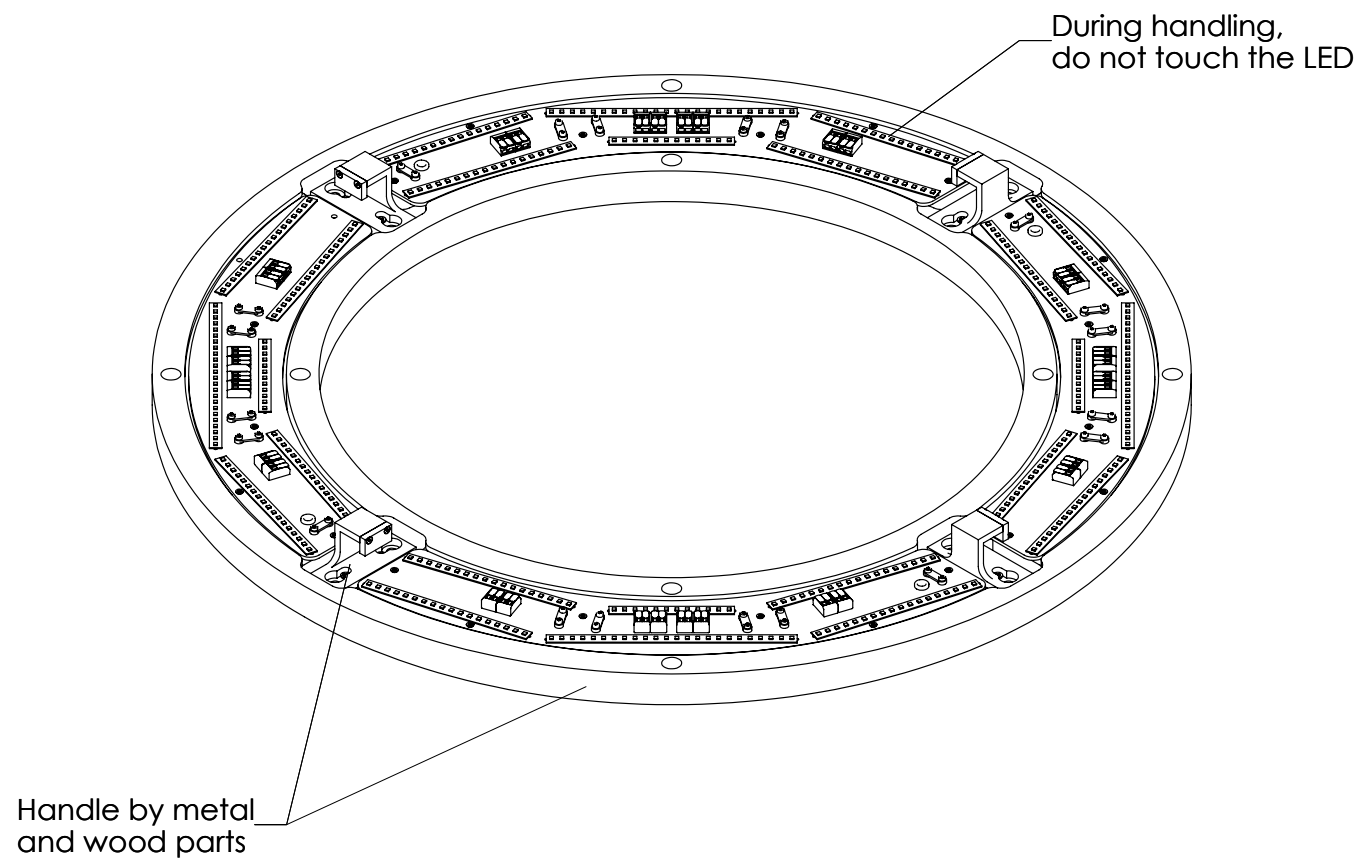
Time: 1 min



PH 02. Precautions - plate

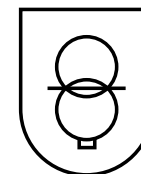
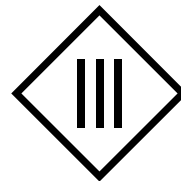
Technicians : 1

Time: 1 min



THIS PRODUCT IS CLASSIFIED AS CLASS III. YOU MUST FOLLOW THE FOLLOWING INSTRUCTIONS:

- POWER MUST BE SUPPLIED ONLY BY A SELV (SAFETY EXTRA LOW VOLTAGE) DRIVER.
- MAXIMUM VOLTAGE : 24 V $\overline{\text{---}}$.
- THE POWER SUPPLY CIRCUIT MUST BE PROTECTED AGAINST SHORT CIRCUITS.
- USING NON-COMPLIANT DRIVERS MAY LEAD TO SAFETY HAZARDS.



PH 04. Check list

Technicians : 1

Time: 1 min

Check that you have:

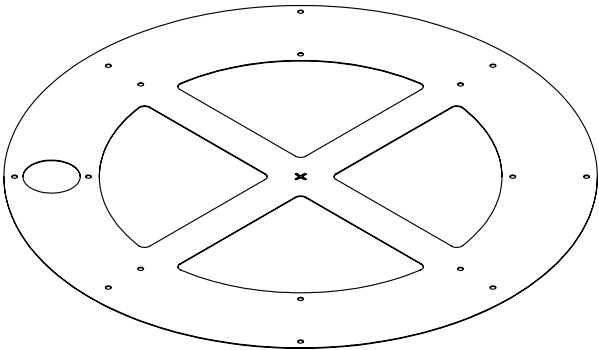
- 1x Plate
- 1 x Lampshade
- 1 x Template

We recommend to use:

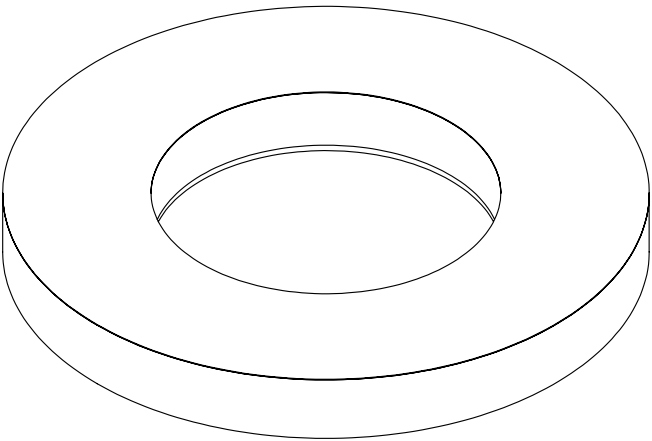
- Cutting clamp
- Wire stripper
- Tension tester
- Drill/Screwdriver
- Fixation system
- Tape measure
- Step ladder

3 people are required to install the lamp

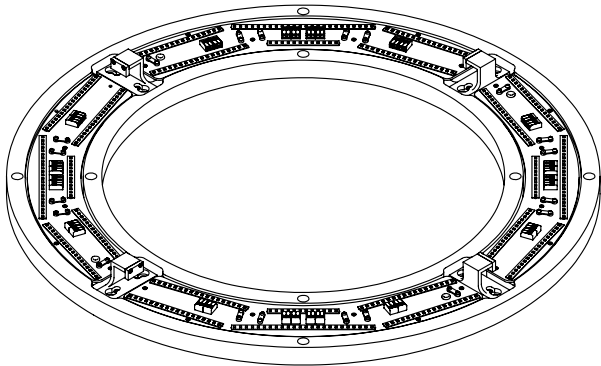
If you have Dim to Warm LED, go to PH 13
If not, go to PH 05



Template



Lampshade



Plate

II. Installation

PH 05. Position the template

Technicians : 3

Time: 4 min

Tools

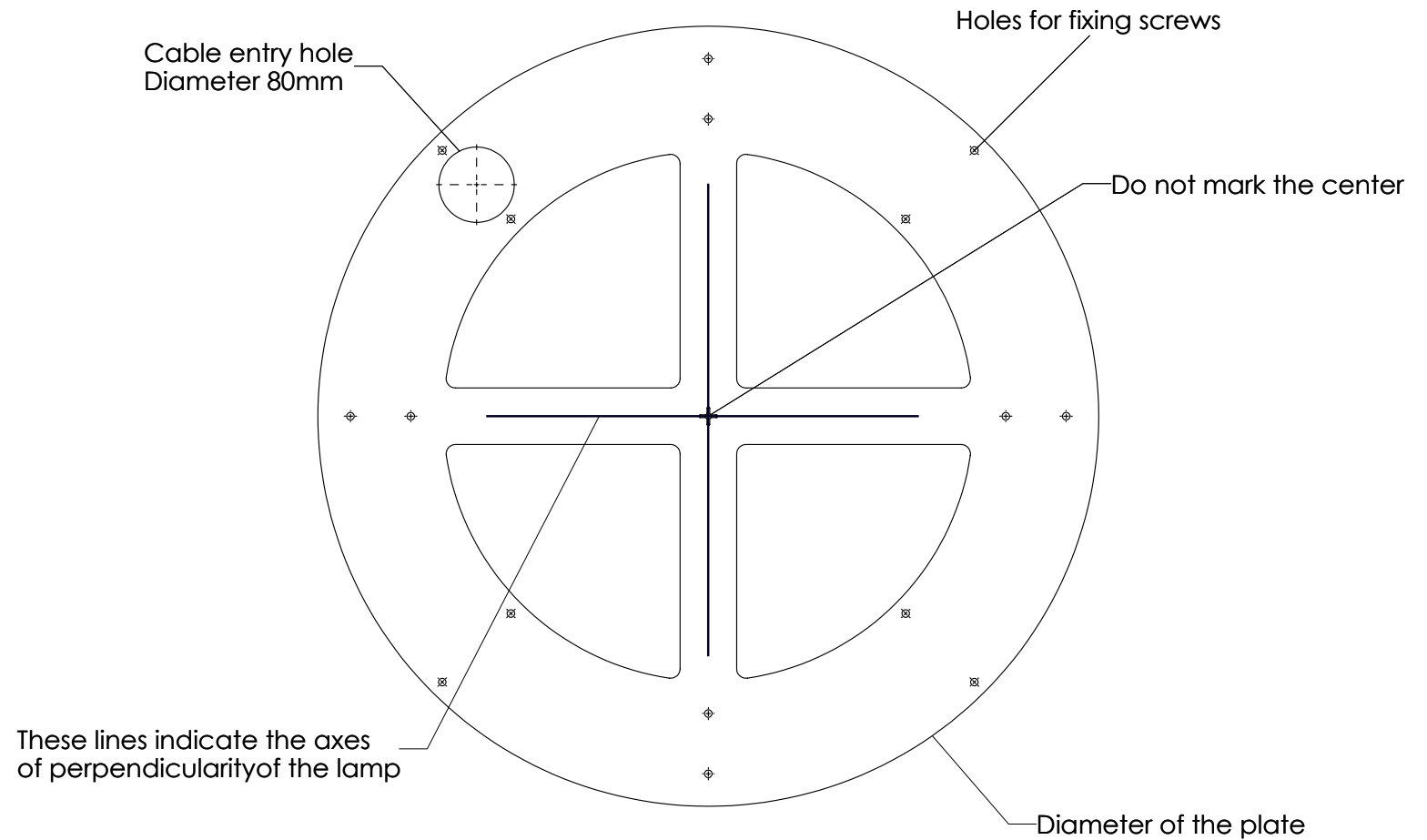
- Pencil
- Drill
- Stairs

Protection

Instructions

- Position the template into the ceiling.
- Check that the cable entry hole coincides with the output.
- Mark the holes for the fixing screws and the cable entry hole.
- Do not mark the center of the template.
- Drill all the holes.

Check



PH 06. Check the voltage

Technicians : 1

Time: 5 min

Tools

- Tension tester
- Cutting clamp
- Wire stripper
- Stairs

Protection

- Cut off electrical power before start to work.

Instruction

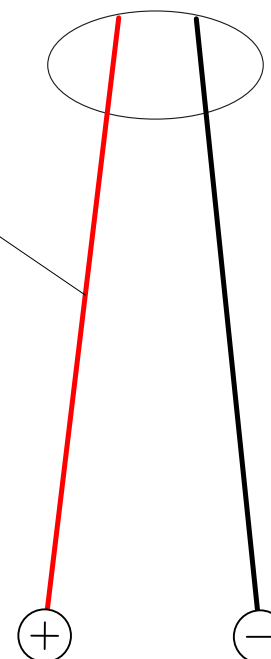
- Check the voltage of secondary cables from output (80mm diameter max).
- The voltage should be 24V constant.

Check

OUTPUT
MAX 80mm

Secondary wires should be connected to a remote power supply

The current should be 24V constant



PH 07. Remove LED plate from entry cable

Technicians : 1

Time: 4 min

Tools

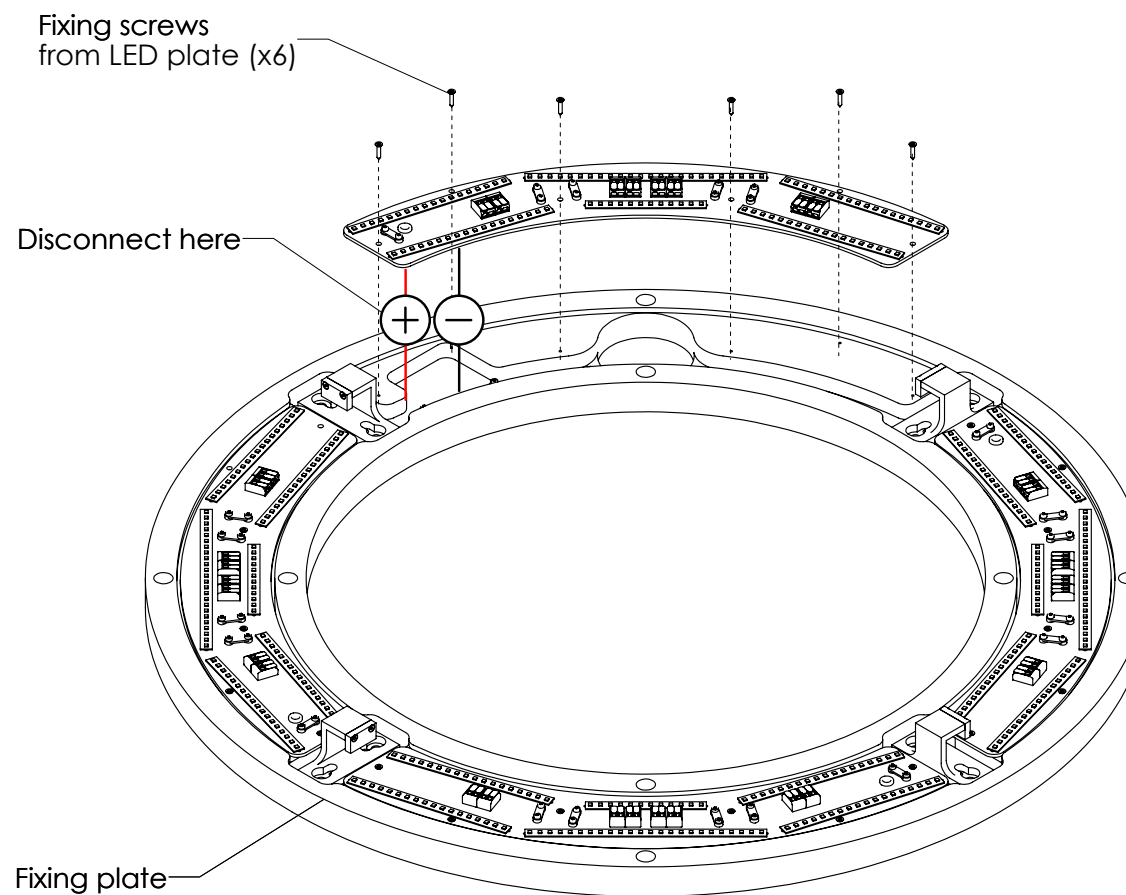
- Cruciform screwdriver

Protection

Instruction

- Unscrew the fixing screws from the LED plate positioned above the entry cable.
- Slightly remove the LED plate.
- Disconnect the cables from the LED plate to remove it completely.
- Stock the plate with LED on top.

Check



PH 08. Fix the plate to ceiling

Technicians : 3

Time: 12 min

Tools

- Fixation system
- Ladders

Protection

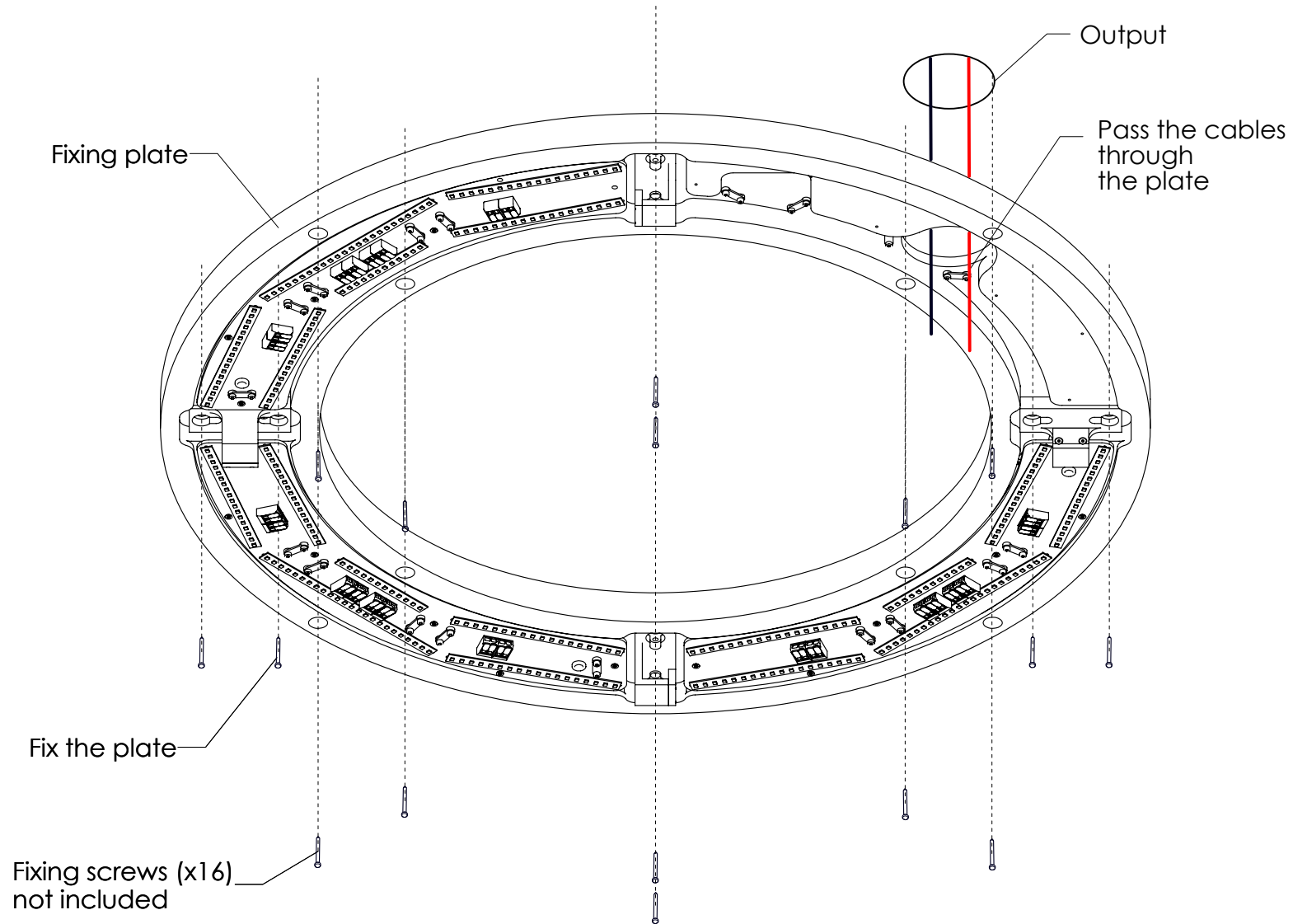
- Cut off electrical power

Instruction

- Pass the secondary cables through the entry cable hole from the plate.
- Raise the plate to the ceiling.
- Position the plate fitting the holes.
- Insert the fixation system to fix the plate into the ceiling.
- Make the electrical connection, respecting polarity.

Check

- Good fixation of the ceiling.



PH 09. Replace LED plate

Technicians : 2

Time: 5 min

Tools

- Cruciform screwdriver

Protection

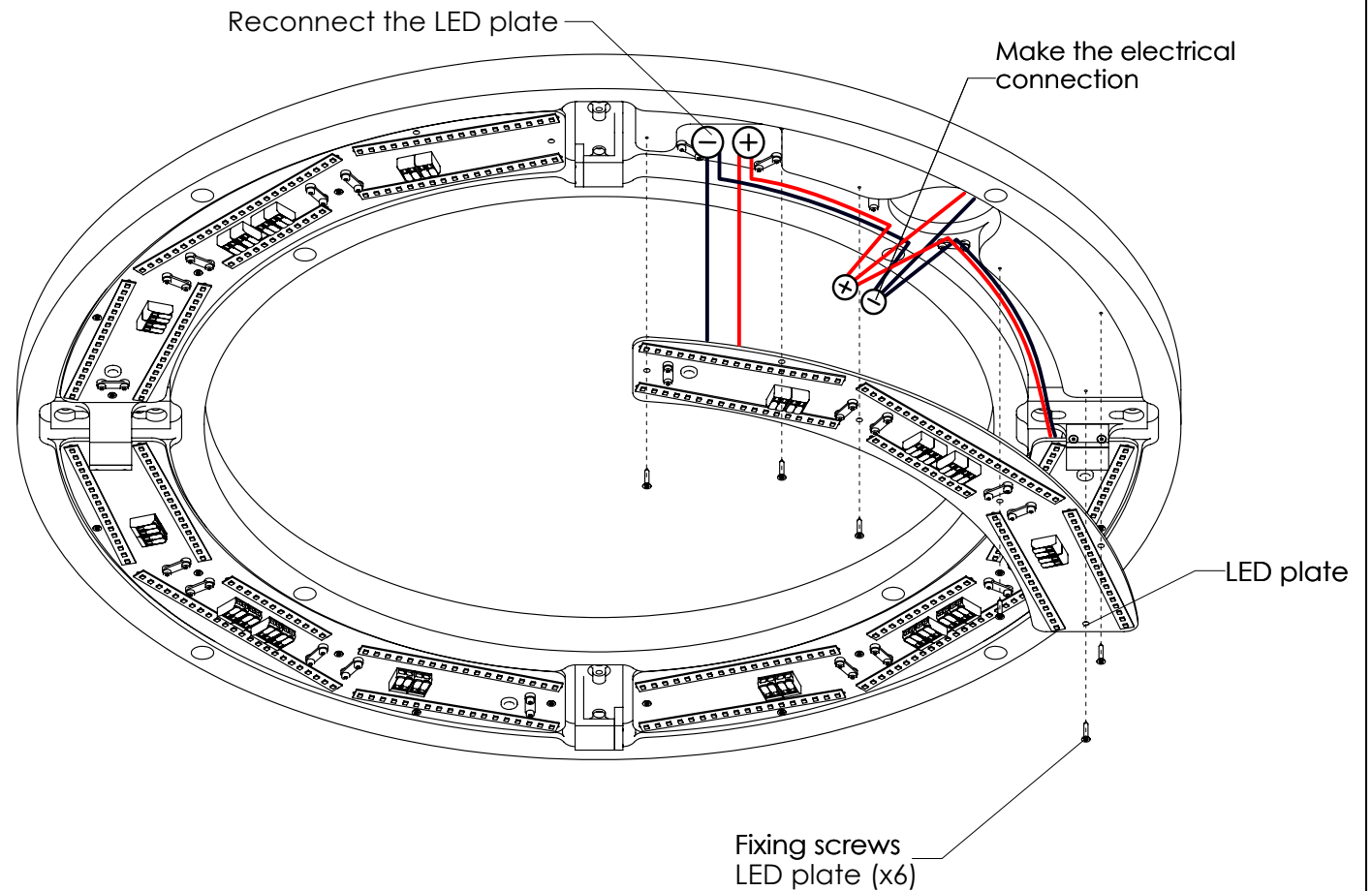
- Work without electric power

Instruction

- Reconnect the secondary cables from LED plate to the cables from fixation plate.
- Position the LED plate into the indicated position.
- Screw the fixing screws to fix the LED plate.

Check

- LED plate is correctly placed.



PH 10. Test

Technicians : 2

Time: 2 min

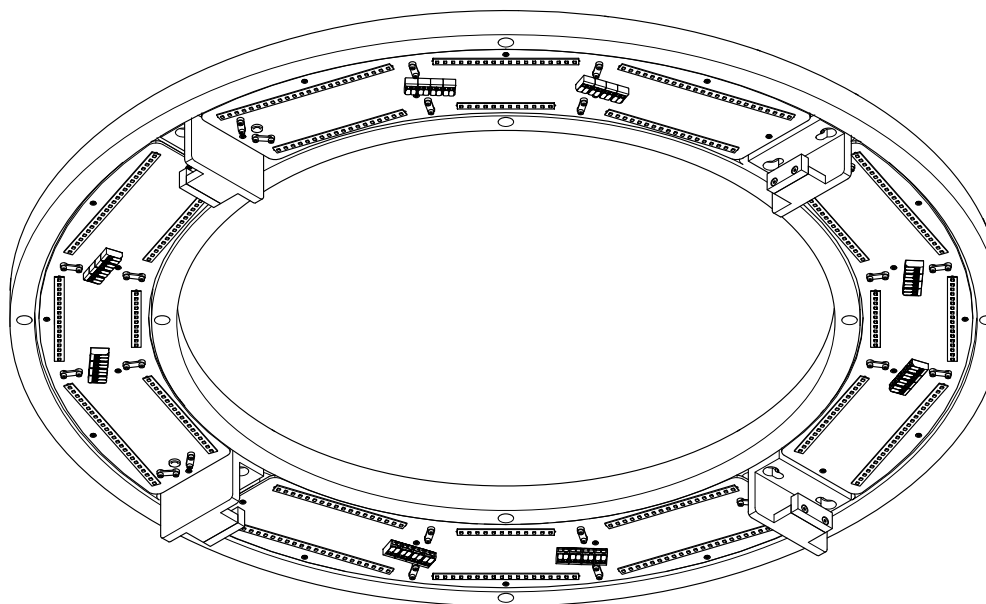
Tools

Protection

Instruction

- Turn on electric power
- Check that all LED works.

Tools



PH 11. Insert the lampshade

Technicians : 2

Time: 5 min

Tools

- Provided protection gloves.

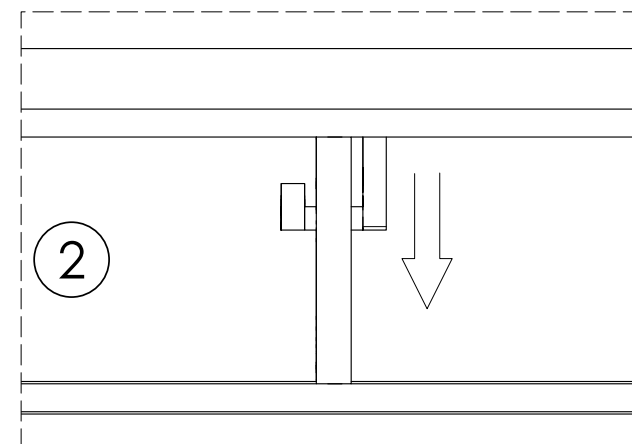
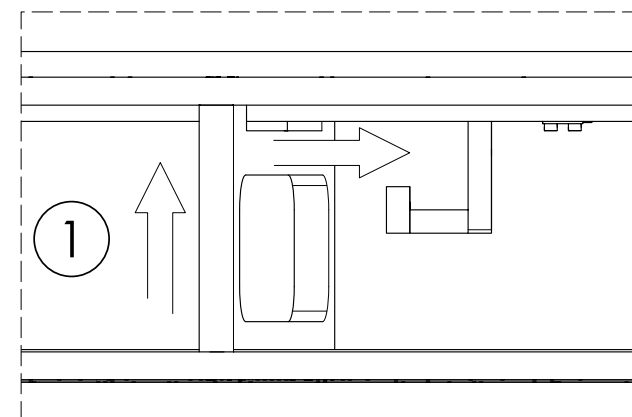
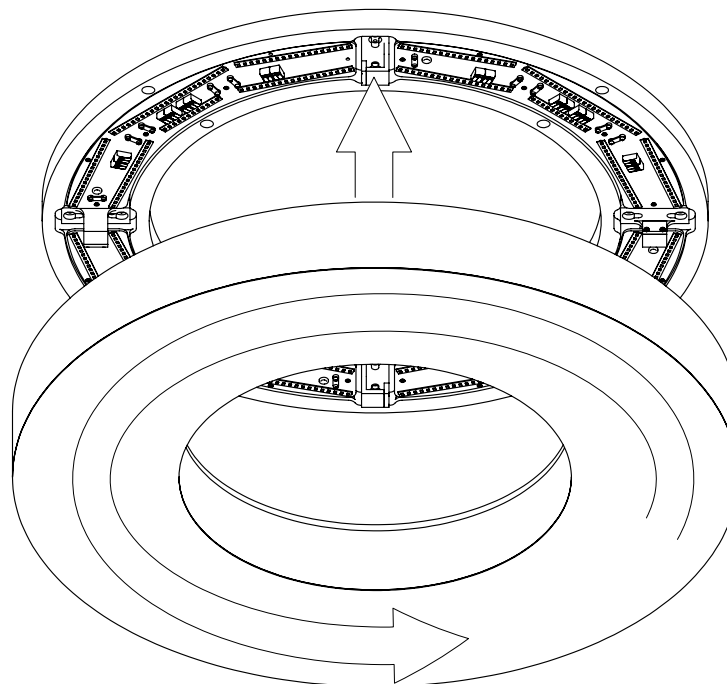
Protection

Instruction

- Insert the lampshade as the picture shows.

Check

- Good fixation of the lampshade.



PH 12. Installation is over		Technicians : 2	Time : 1 min
Tools			
Protection			
Instruction - Test the lighting.			
Check			

III. Dim to Warm installation

PH 13. Position the template

Technicians : 3

Time: min

Tools

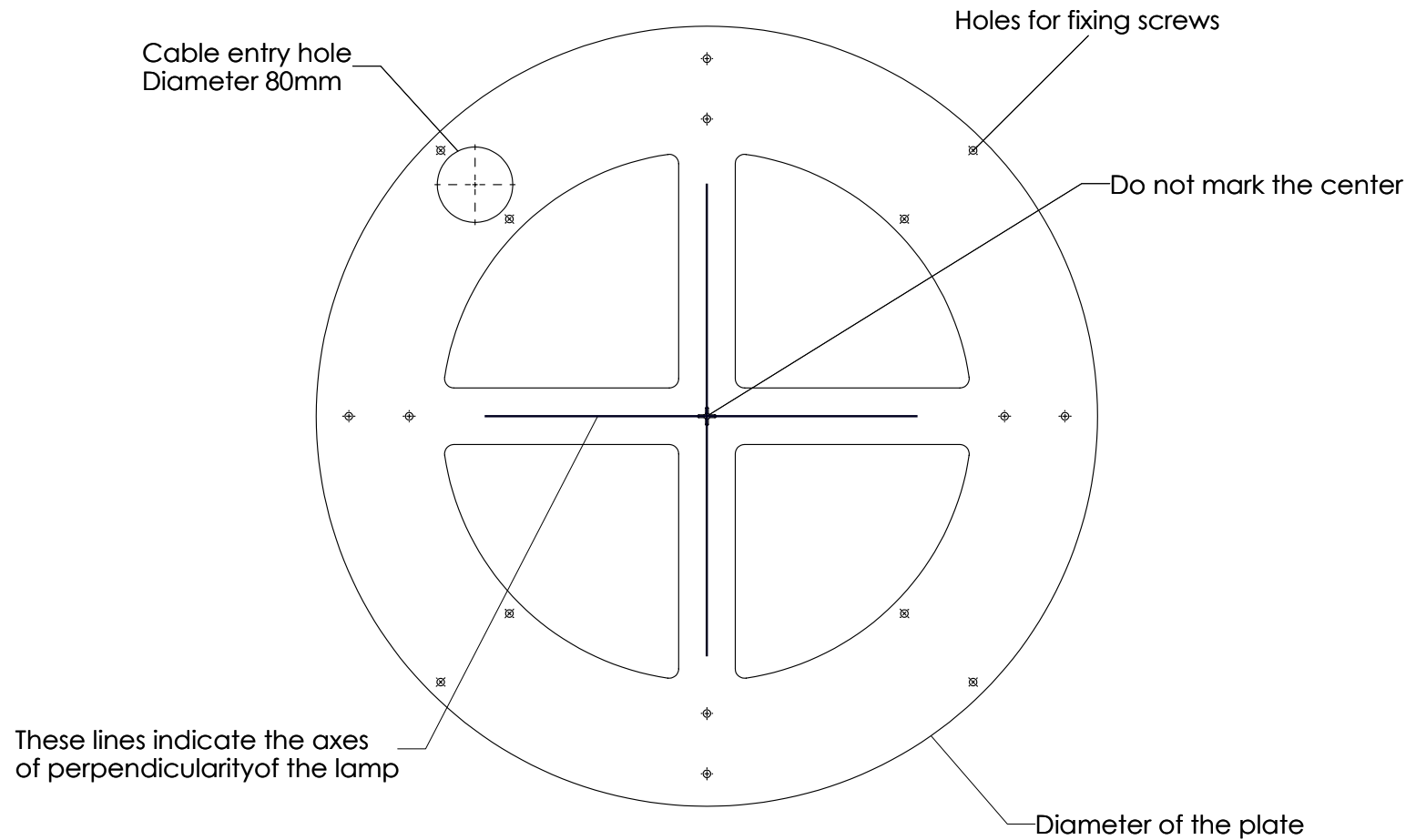
- Pencil
- Drill
- Stairs

Protection

Instructions

- Position the template into the ceiling.
- Check that the cable entry hole coincides with the output.
- Mark the holes for the fixing screws and the cable entry hole.
- Do not mark the center of the template.
- Drill all the holes.

Check



PH 14. Check the voltage

Technicians : 1

Time: min

Tools

- Tension tester
- Cutting clamp
- Wire stripper
- Stairs

Protection

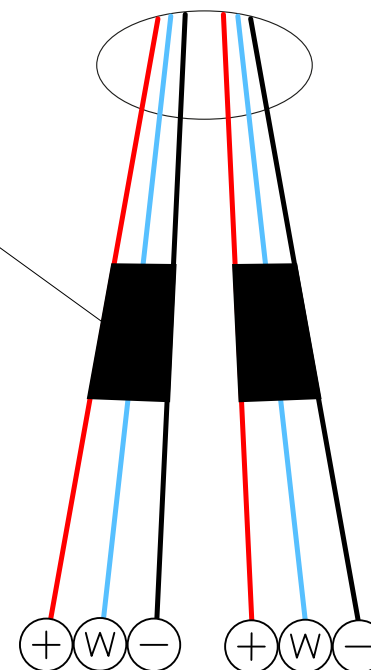
- Cut off electrical power before start to work.

Instruction

- Check the voltage of secondary cables from output (80mm diameter max).
- The voltage should be 24V constant.

Check

OUTPUT
MAX 80mm



Each couple of secondary cables should be connected to a remote power supply with a driver

The current should be 24V constant

PH 15. Remove LED plate from entry cable

Technicians : 1

Time: min

Tools

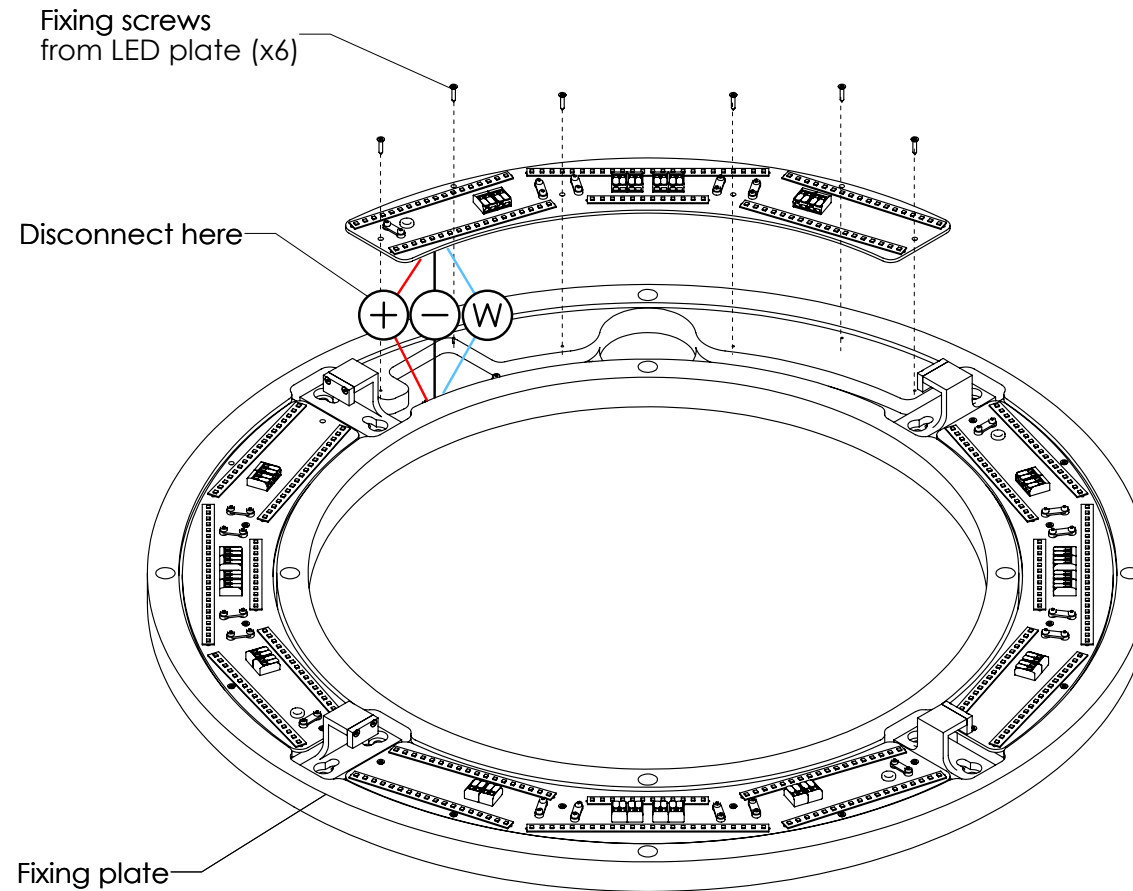
- Cruciform screwdriver

Protection

Instruction

- Unscrew the fixing screws from the LED plate positioned above the entry cable.
- Slightly remove the LED plate.
- Disconnect the cables from the LED plate to remove it completely.
- Stock the plate with LED on top.

Check



PH 16. Fix the plate to ceiling

Technicians : 3

Time: min

Tools

- Fixation system
- Ladders

Protection

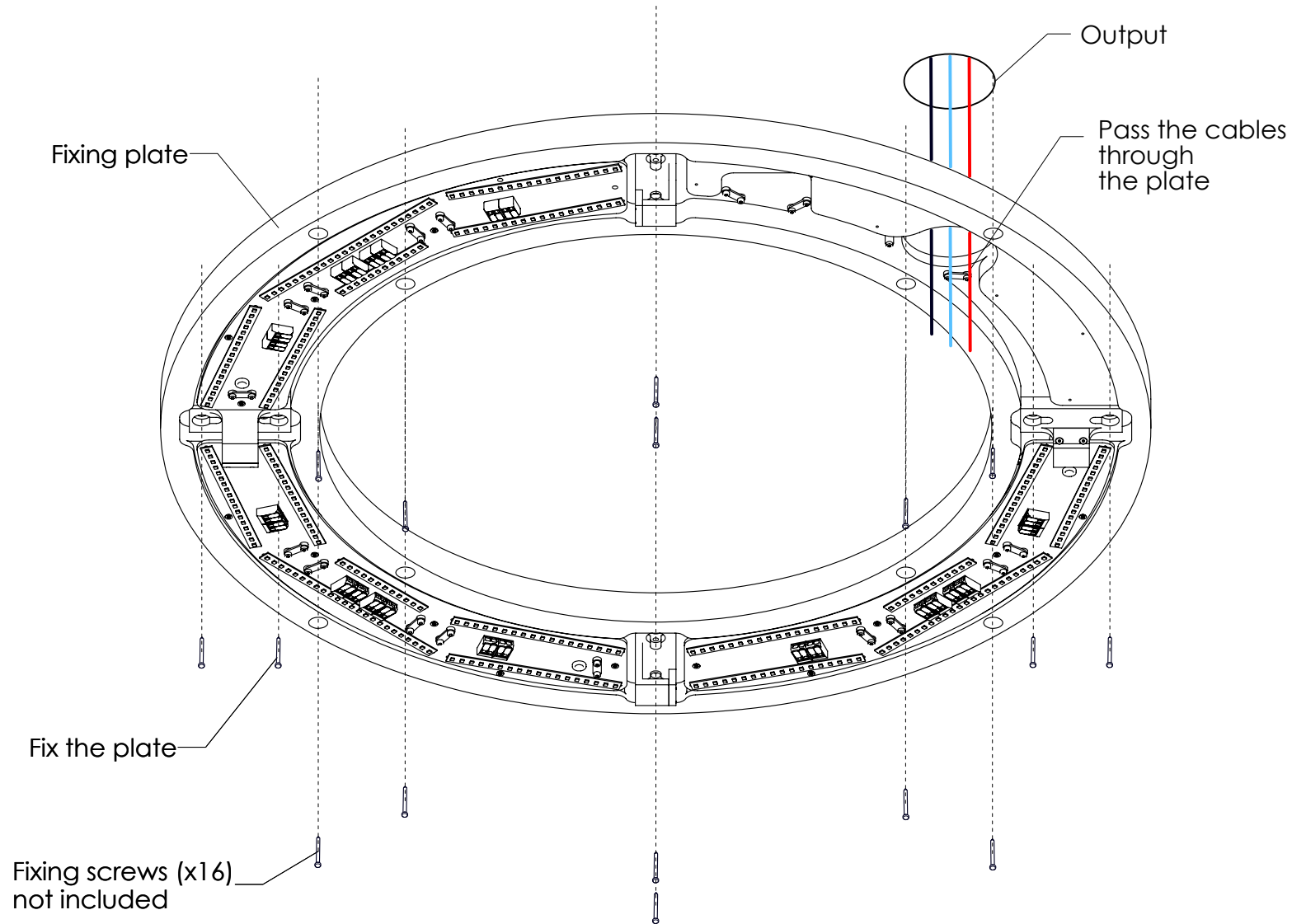
- Cut off electrical power

Instruction

- Pass the secondary cables through the entry cable hole from the plate.
- Raise the plate to the ceiling.
- Position the plate fitting the holes.
- Insert the fixation system to fix the plate into the ceiling.
- Make the electrical connection, respecting polarity.

Check

- Good fixation of the ceiling.



PH 17. Replace LED plate

Technicians : 2

Time: min

Tools

- Cruciform screwdriver

Protection

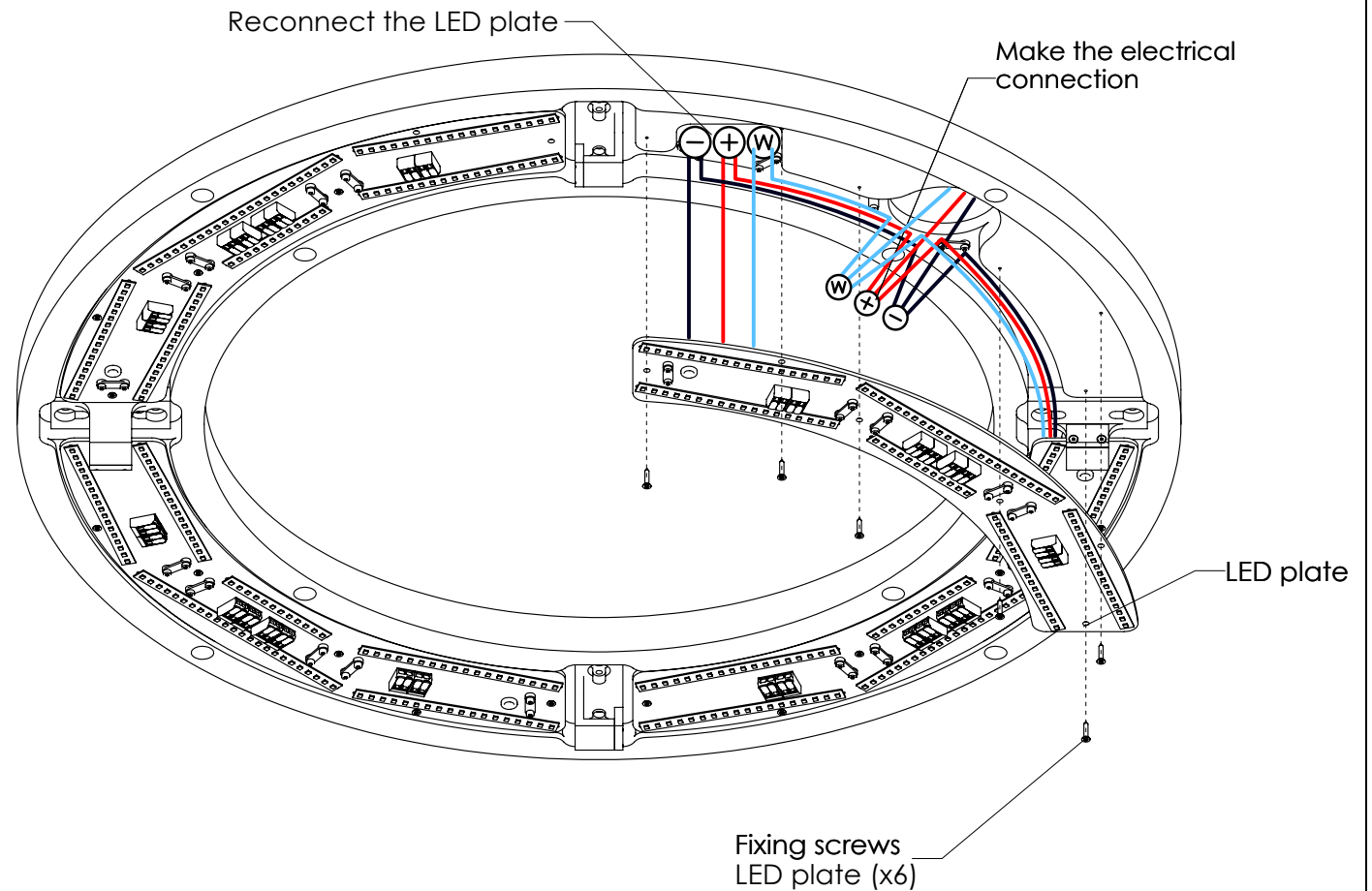
- Work without electric power

Instruction

- Reconnect the secondary cables from LED plate to the cables from fixation plate.
- Position the LED plate into the indicated position.
- Screw the fixing screws to fix the LED plate.

Check

- LED plate is correctly placed.



PH 18. Test

Technicians : 2

Time: min

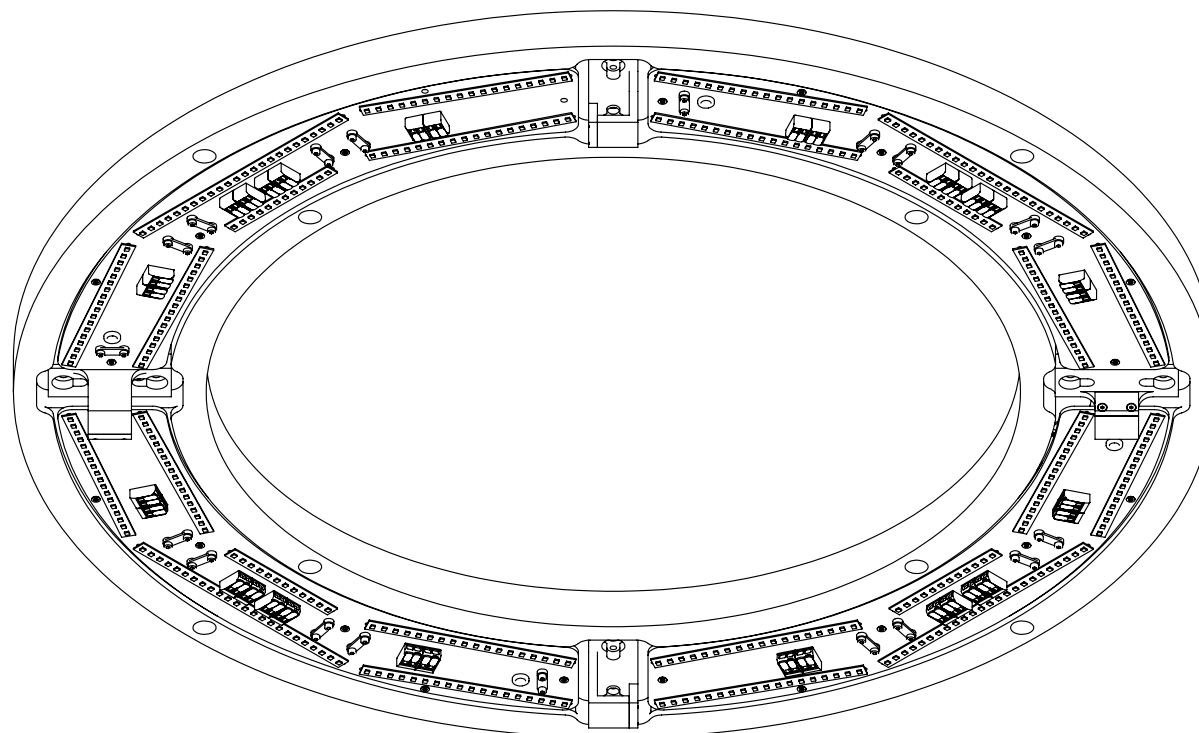
Tools

Protection

Instruction

- Turn on electric power
- Check that all LED works.

Tools



PH 19. Insert the lampshade

Technicians : 2

Time: min

Tools

- Provided protection gloves.

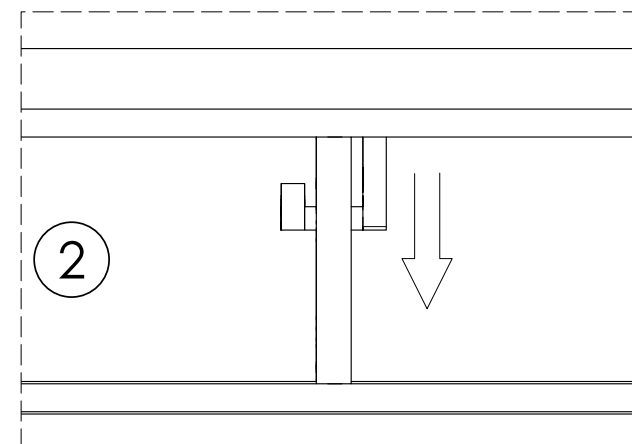
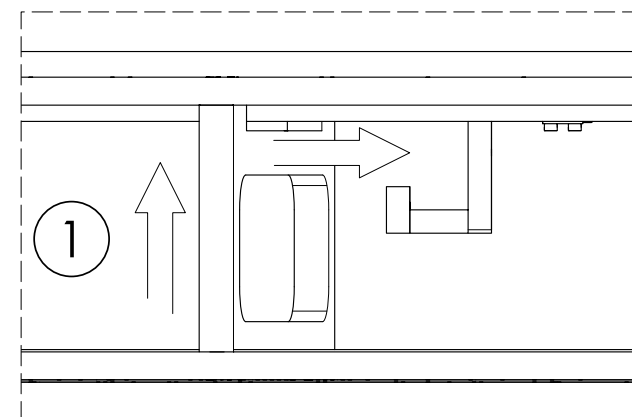
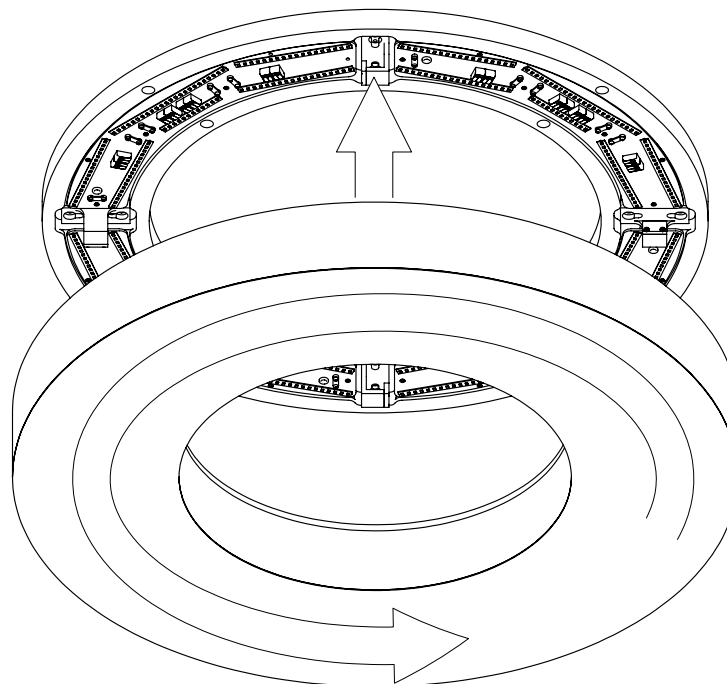
Protection

Instruction

- Insert the lampshade as the picture shows.

Check

- Good fixation of the lampshade.



PH 20. Installation is over		Technicians : 2	Time : min
Tools			
Protection			
Instruction - Test the lighting.			
Check			