

o z o n e

TECHNICAL DATA: LINE C110

Version: ENGLISH

Date: December 2025



o z o n e – LINE C90

DESCRIPTION: Ceiling lamp.

White lacquered aluminum structure. White paper diffusing material.

Warm white 2700K LED lighting, or alternatively 2200K, 72W, 3000Lumens.

Optional *Dim to Warm*, warm white LED lighting from 1900K (low intensity) to 2500K (high intensity), 83W, 5000Lumens.

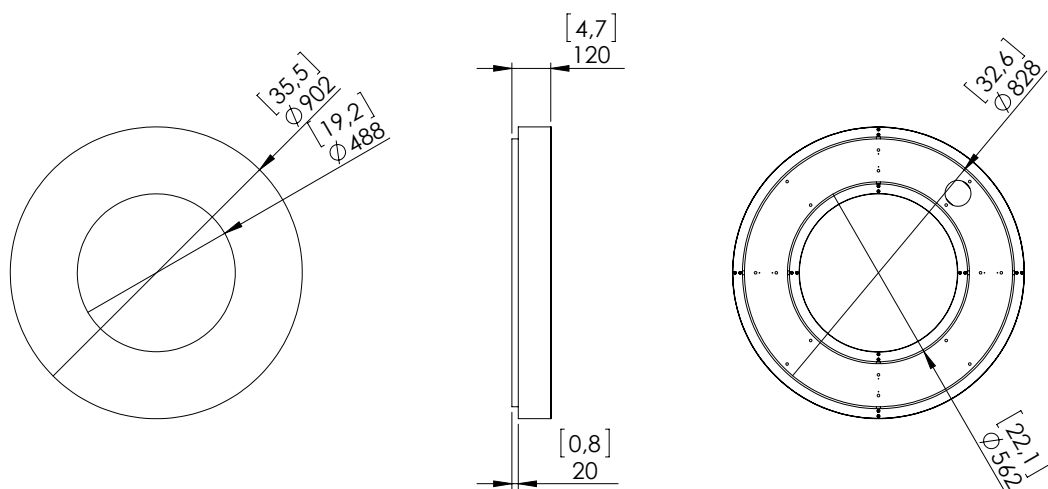
Converter 24V non-integrated, to be placed in a distant box.

Weight: 14kg – 36.9lbs

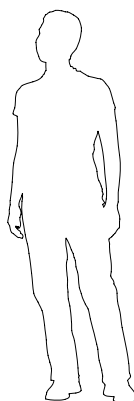
Size: 90x90x12cm – 19.2x19.2x4.7in

Compliance: CE Class III

Origin: France



Dimensions in mm [inches]



Silhouette : 175cm / 69in

o z o n e – LINE C90

FUNCTION: The lighting provides a diffused light, softening the shadows.

The light output is 3000Lumens. The light intensity can be dimmed from 0 to 100%.

A warm light is produced by 2700K or 2200K alternative LEDs, with an CRI>95 and an yield of 70lm/W. Energy efficiency: G (EU Regulation 2019/2015).

Optional *Dim to Warm*, the lighting provides a diffused light, softening the shadows.

The light output is 5000Lumens. The light intensity can be dimmed from 0 to 100%.

A warm light is produced by LEDs from 1900K (low intensity) to 2500K (high intensity), with an CRI>95 and an efficiency of 90lm/W. Energy efficiency: G (EU Regulation 2019/2015).

ELECTRICAL CONNECTION 2700K OR 2200K: Before connecting the fixture to the grid make sure it is not powered. Use the connectors provided on the lighting. The lighting consumes 72W. It is supplied without 24VDC power supply and is designed to receive 1 remote power supplies of 24VDC. We recommend the use of 1 MEANWELL HLG-100H-24 power supplies with an ELDOLED LINEARdrive 211D driver witch allows optimal 0-10V dimming from 0 to 100%. They must be placed in an accessible and ventilated place.

Make sure the cable length between the power supplies and the light and their section apply to the attached diagram.

The cables must not cross the screws of the plate.

After disconnecting the power supply, make the electrical connection using the supplied connectors and according to the polarity (red: plus, black: minus).

IMPORTANT:

Attention, information valid only for 2700K or 2200K

Remote power supplies 24V.

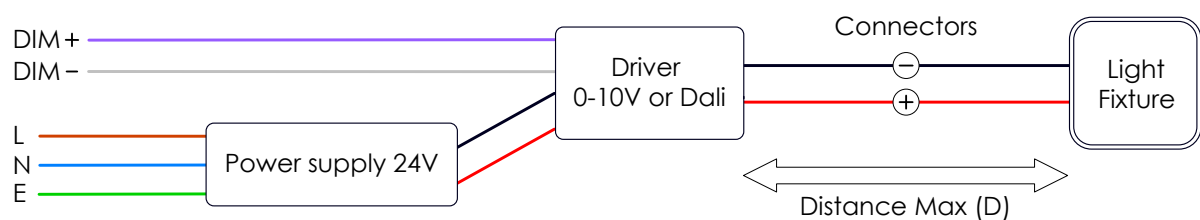
2 wires for power supply.

0-10V or DALI dimming.

The output hole should not exceed 80mm.

Note that the arrival of the cable is offset from the center of the circle

CABLE SIZE / MAX DISTANCE (D)				
0,5 mm ² / 20 AWG	0,75 mm ² / 18 AWG	1,0 mm ² / 17 AWG	1,5 mm ² / 15 AWG	2,5 mm ² / 13 AWG
3 m / 12 ft	5 m / 18 ft	7 m / 24 ft	11 m / 37 ft	19 m / 62 ft



ELECTRICAL CONNECTION DIM TO WARM: Before connecting the fixture to the grid make sure it is not powered. Use the connectors provided on the lighting. The lighting consumes 83W. It is supplied without 24VDC power supply and is designed to receive 1 remote power supplies of 24VDC. We recommend the use of 1 MEANWELL HLG-100H-24 power supplies with an ELDOLED LINEARdrive 200D driver witch allows optimal 0-10V dimming from 0 to 100%. They must be placed in an accessible and ventilated place.

Make sure the cable length between the power supplies and the light and their section apply to the attached diagram.

The cables must not cross the screws of the plate.

After disconnecting the power supply, make the electrical connection using the supplied connectors and according to the polarity (red: plus, black: minus).

IMPORTANT:

Attention, information valid only for Dim to Warm

Remote power supplies 24V.

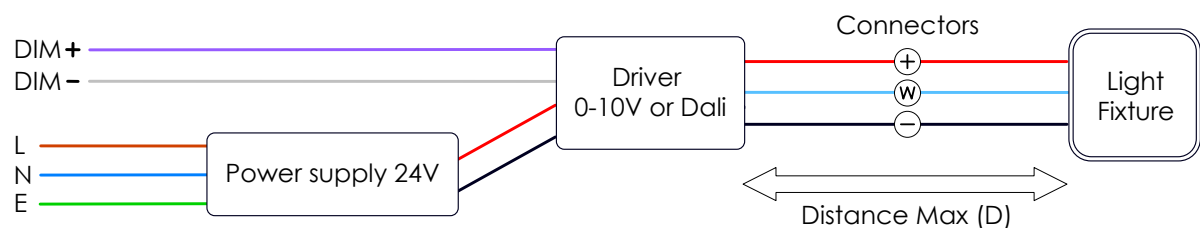
3 wires for power supply.

0-10V or DALI dimming.

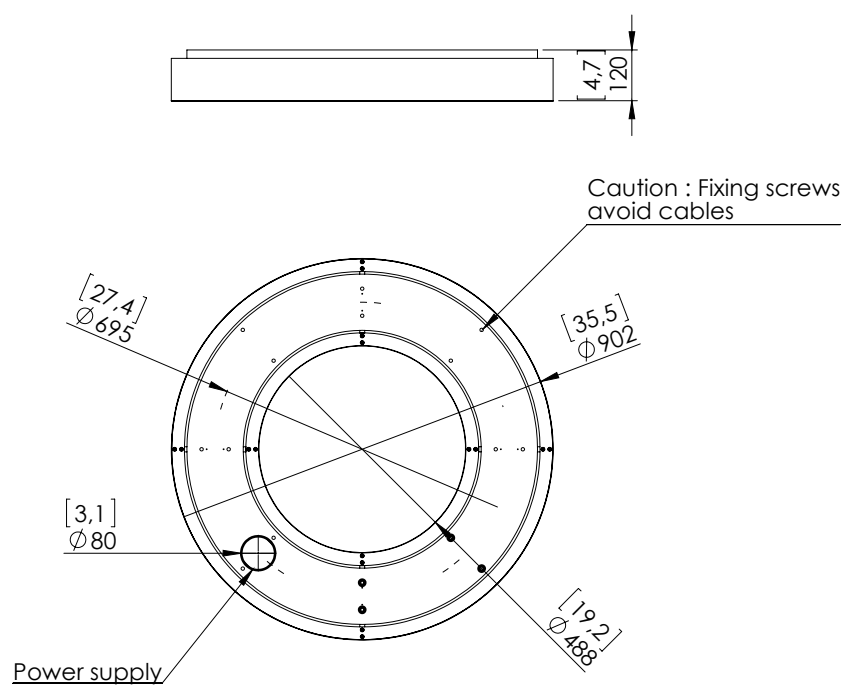
The output hole should not exceed 80mm.

Note that the arrival of the cable is offset from the center of the circle

CABLE SIZE / MAX DISTANCE (D)				
0,5 mm ² / 20 AWG	0,75 mm ² / 18 AWG	1,0 mm ² / 17 AWG	1,5 mm ² / 15 AWG	2,5 mm ² / 13 AWG
3 m / 10 ft	4 m / 16 ft	6 m / 21 ft	9 m / 32 ft	16 m / 54 ft



o z o n e – LINE C90



Dimensions in mm [inches]

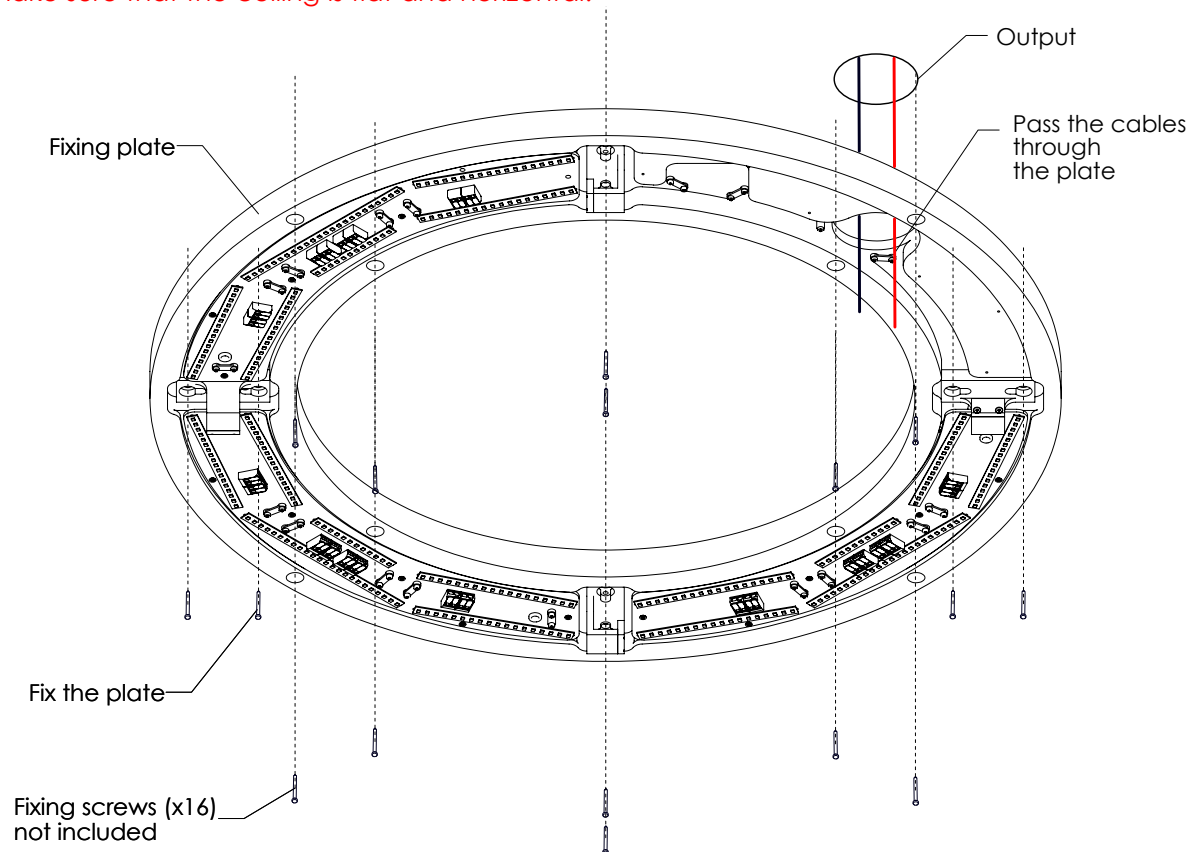
MECHANICAL FASTENING: If necessary please reinforce the ceiling at the plate. Make sure that the ceiling is flat and horizontal. The fixing of the plate is realized with screws (non-included), see map. Use the appropriate method according to the materials on which it will bind. Lamp Weight: 26kg - 57lbs. Drill avoiding electrical cables.

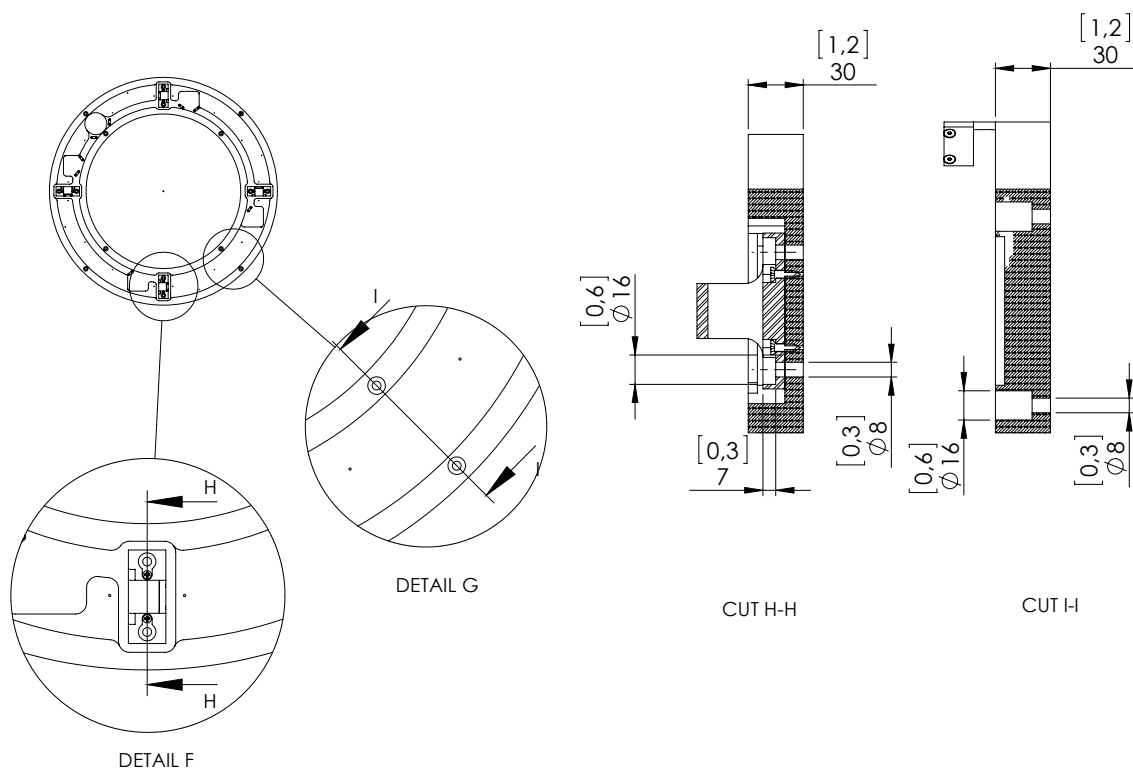
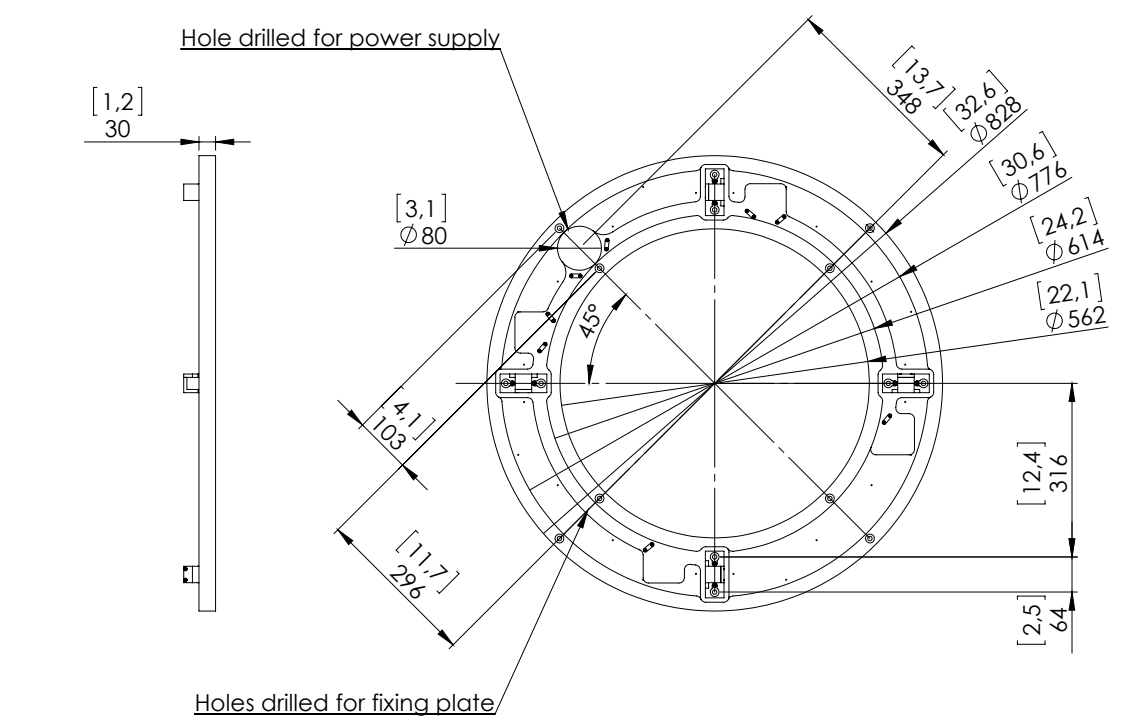
IMPORTANT:

If necessary please reinforce the ceiling at the plate.

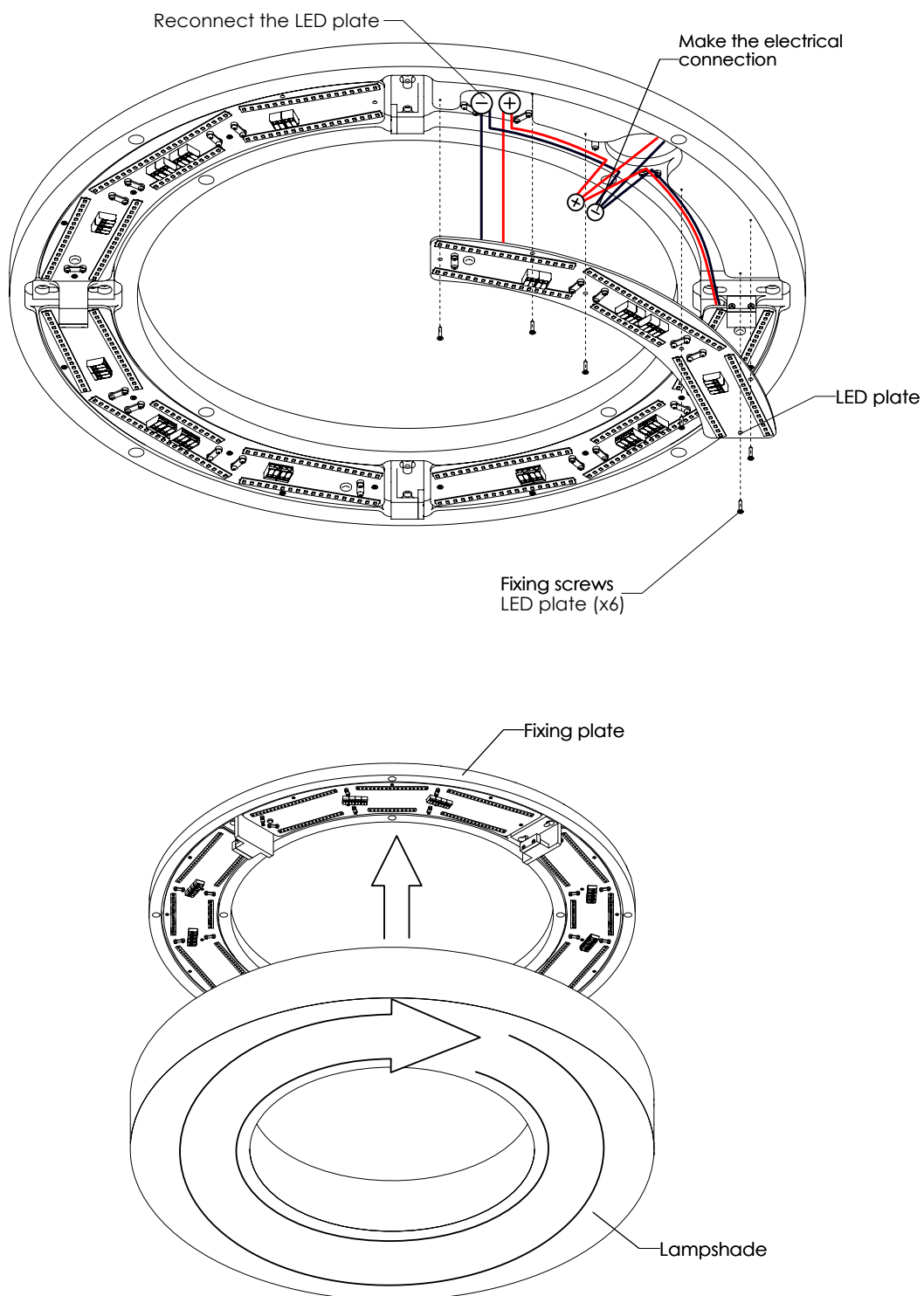
Weight: 14kg – 30.9lbs

Make sure that the ceiling is flat and horizontal.

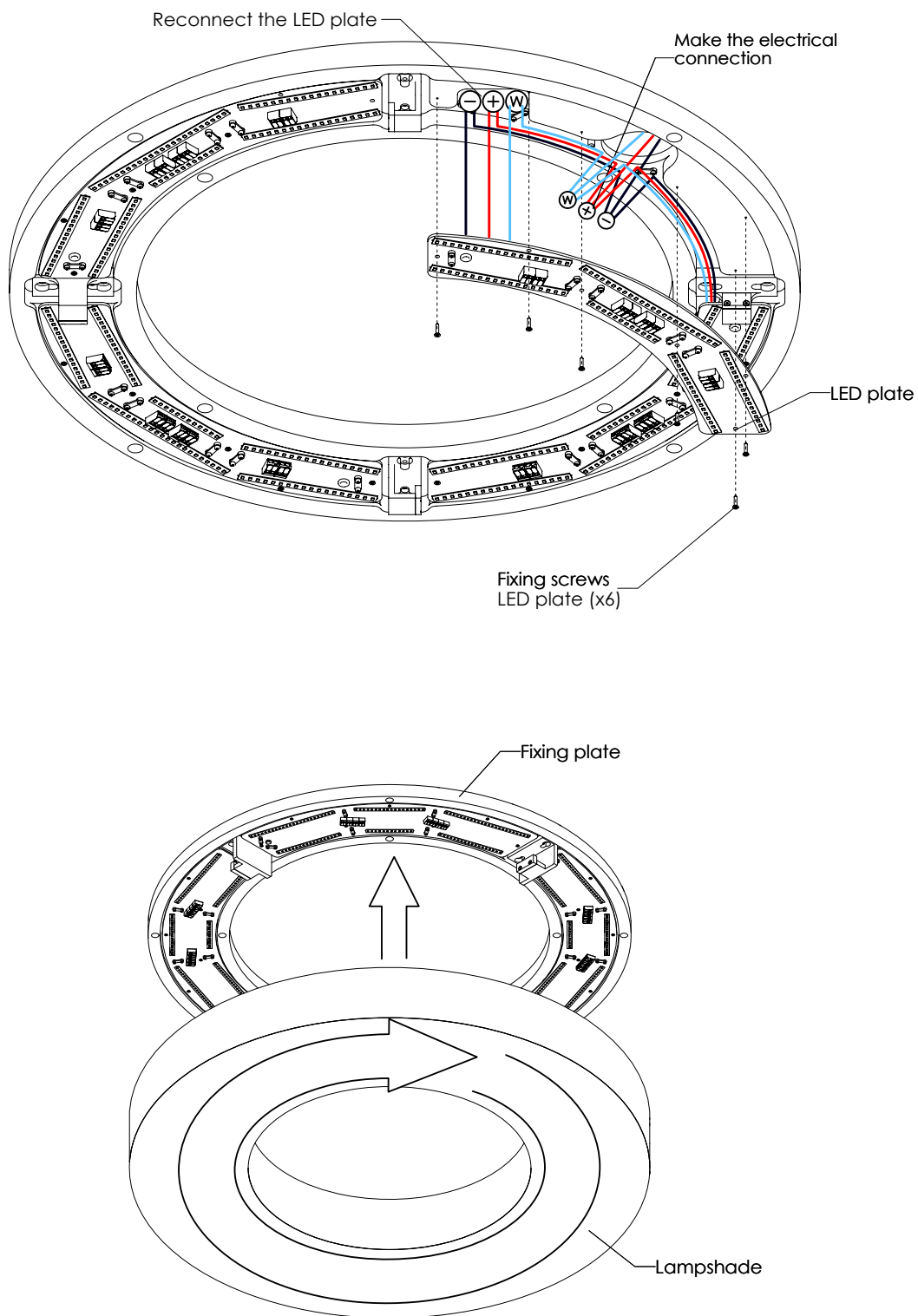




2200K OR 2700K MOUNTING: Mount the Lampshade to the fixing plate by turning the lampshade to lock them on the hooks of the fixing plate. Be careful not to damage the LEDs.



DIM TO WARM MOUNTING: Mount the Lampshade to the fixing plate by turning the lampshade to lock them on the hooks of the fixing plate. Be careful not to damage the LEDs.

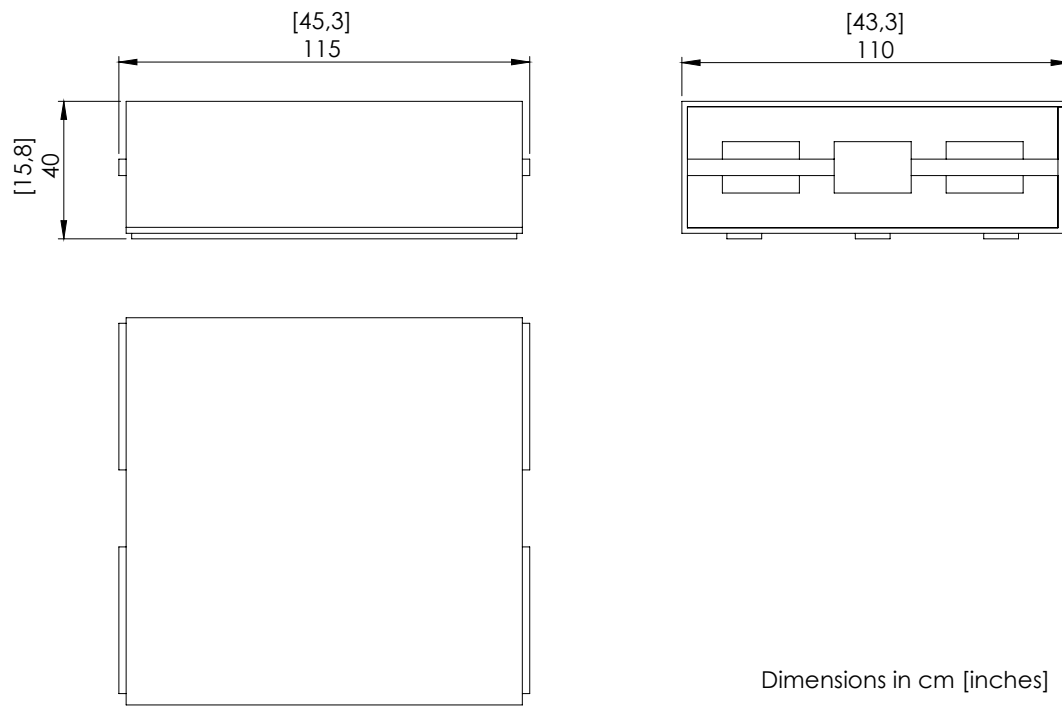


o z o n e – LINE C90

PACKAGING: The lamp is protected by a wooden crate and polyurethane foam packaging. Store in a cool, dry place and avoid excessive heat and humidity.

Weight light included: 35kg/ 77.2lbs

Dimensions: 115x110x40cm / 45.3x43.3x15.8in



Dimensions in cm [inches]

MAINTENANCE: The lamp should be installed in a tempered, dry place and avoid excessive heat and humidity. The plate cleaning is done with a white soft damp cloth. For some traces locally, you can use a soft cloth with glass cleaner. Be careful not to touch the LED to avoid damaging them. The diffuser cleaning is carried out with a dry cloth. For some traces can be used locally with a soft damp cloth carefully.

IMPORTANT:

To avoid damaging the finish, follow the instructions above. Do not use a damp cloth on the paper diffuser.

